



ERi/LOGR Front-end Installation Instructions

(Single PC using Tomcat)

The ERi/LOGR front-end graphical user interface (GUI) is a web application written in Java that connects to the backend (CICS on z/OS). ERi/LOGR requires a web application server for execution. ERi uses Tomcat, an open-source web application server, for facilitating the evaluation of ERi/LOGR.

The following steps can be used to setup the ERi/LOGR front-end on an individual PC using Tomcat. For a production installation, please consult with your staff who install and support web application servers. ERi technical support staff are also available for consultation.

If Tomcat is already installed, please skip the section “Installing Tomcat” and go directly to “[Installing ERi/LOGR Front-end](#)”.

Installing Tomcat

Step 1: Download Eclipse

The current Windows version of Tomcat can be downloaded directly from the following link:

[Tomcat for Windows](#)

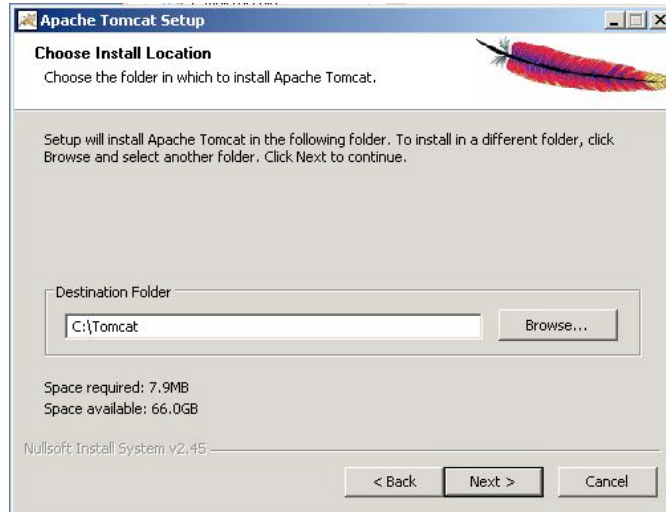
Step 2: Install

The Tomcat download file is a self contained package installer that can be invoked by double clicking the file.

Follow the instructions on the installer and agree to the license.



The installation procedure will prompt for an install location. ERI recommends creating a simple installation path, since the ERI/LOGR software must be manually copied inside. The following example uses C:\Tomcat as the destination folder:



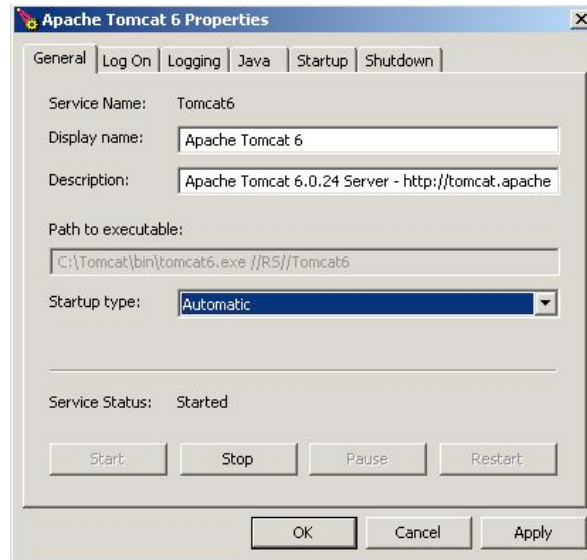
Continue with the installation and use the default parameters automatically introduced by the installer.



The installation of Tomcat is now complete.

Step 3: Stopping / Starting Tomcat

The Tomcat control panel can be opened from the Start menu: *Programs - Apache Tomcat 6.0 - Configure Tomcat*. You can use this control panel to Start and Stop Tomcat.



It is recommended to set up *Startup type* as *Automatic*. With this setting, Tomcat will be automatically started when the machine is rebooted.

Step 1: Download the application

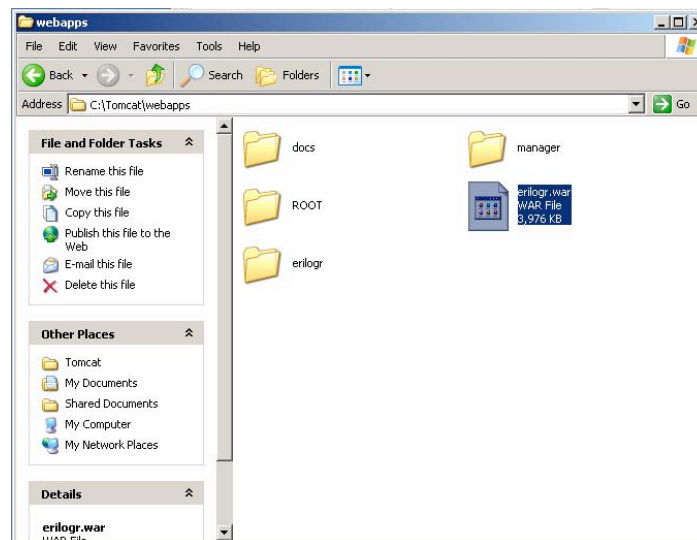
Download the latest version of Eri/LOGR from the website (WAR file):

<http://erisoft.com/erilogr-download/erilogr.war>

Your web browser will prompt you for an authorized userid and password, please contact Eri for this information at 919/406-0067 (US). For international contact numbers please refer to the Eri Website [Contact page](#).

Step 2: Install the application

Copy the downloaded file to the web applications directory of Tomcat (*webapps*). If the chosen installation path was *C:\Tomcat*, the file would have to be copied in *C:\Tomcat\webapps*:



After a few seconds, Tomcat will detect the file has been copied and extract its contents, creating an *erilogr* folder.

Step 3: Start the application

The Eri/LOGR front-end has now been installed and can be reached using the following link:

<http://localhost:8080/erilogr/login.do>